

With the pump inlet, outlet and pump jack connected to the main assembly, the pump can now be mounted with screws in the position previously identified. (A pilot hole using a 1/16" drill bit is recommended for particle board side-walls.)

NOTE: you may rotate the face of the pressure gauge, if needed, for easier reading.



AQUALITE / PLATINIUM 90 / PSS90 INSTALLING THE OPTIONAL PUMP

1. Prepare to Mount the Pump (PBA-G)

Identify a space to place the pump. The pump can be placed on the floor for convenience, preferably in close proximity to the main assembly. This will ensure that the tubing is kept to a minimum and is neatly arranged.

The pump may be mounted as well, however, do not mount the pump with screws until the tubing is completed.

In the main assembly, the CARB 12 pre-filter is connected to the feed assembly and to the RO Module, such that the flow is indicated coming from the feed water assembly to CARB 12 pre-filter to the RO Module. Remove the tubing that makes the connection between the feed assembly and the CARB 12 pre-filter; the pump will be connected in between these (figure D1).

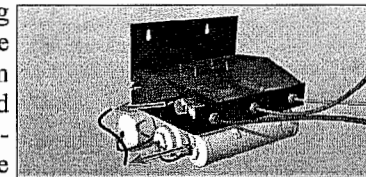


Fig. D1: Remove tubing that connects CARB 12 to feed assembly

2. Connect the Pump Inlet to the Feed Assembly

The Platinum Booster Assembly (PBA) includes both a pump and a pressure gauge. Remove the blue plugs on the pump by depressing the collets (figure D2).

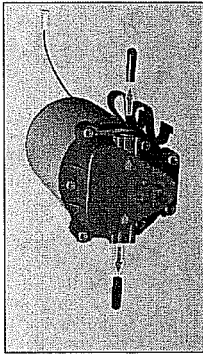


Fig. D2: Remove the plugs

Measure and cut a length of the yellow tubing to connect the pump to the feed assembly. Insert one end of the yellow tubing to the feed assembly outlet as shown in Figure D3 (where the CARB 12 pre-filter was previously connected).

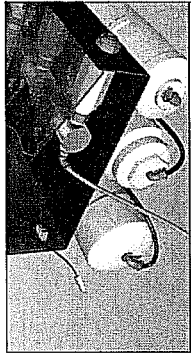


Fig. D3: Connect yellow tubing to the feed assembly

Insert the “T” connector of the pressure gauge in the pump inlet (Note the arrows indicating the flow). Refer to figure D4.

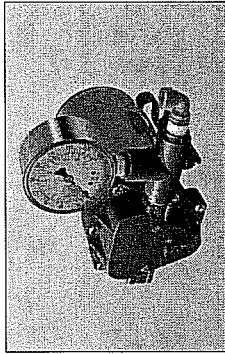


Fig. D4: Connect pressure gauge to pump

Insert the yellow tubing into the other end of the “T” connector. (Figure D5)

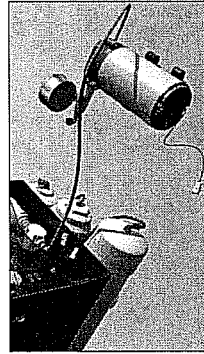


Fig. D5: Insert yellow tubing from the feed assembly to pressure gauge

3. Connect the Pump Outlet to the CARB 12 Pre-filter

Measure and cut a length of the red tubing to connect the pump to the CARB 12 pre-filter.

Insert one end of the red tubing into the pump outlet, and the other end of the tubing in the CARB 12 inlet. (Note the arrows indicating the flow on both the pump and the CARB 12 pre-filter).

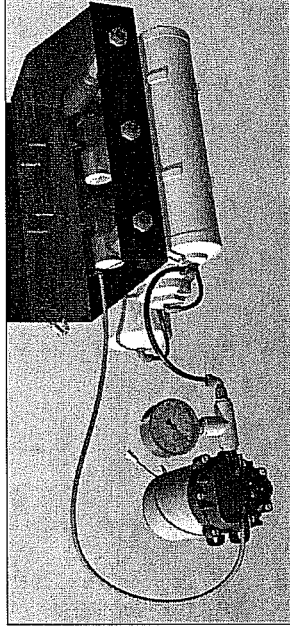


Fig. D6: Connect red tubing from pump outlet to CARB 12 inlet

4. Mount the Pump (PBA)

Connect the pump to the pump jack on the main assembly (see figure D7).

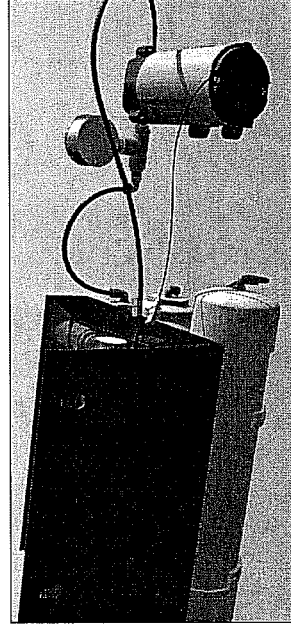


Fig. D7: Connect pump to pump jack on main frame